

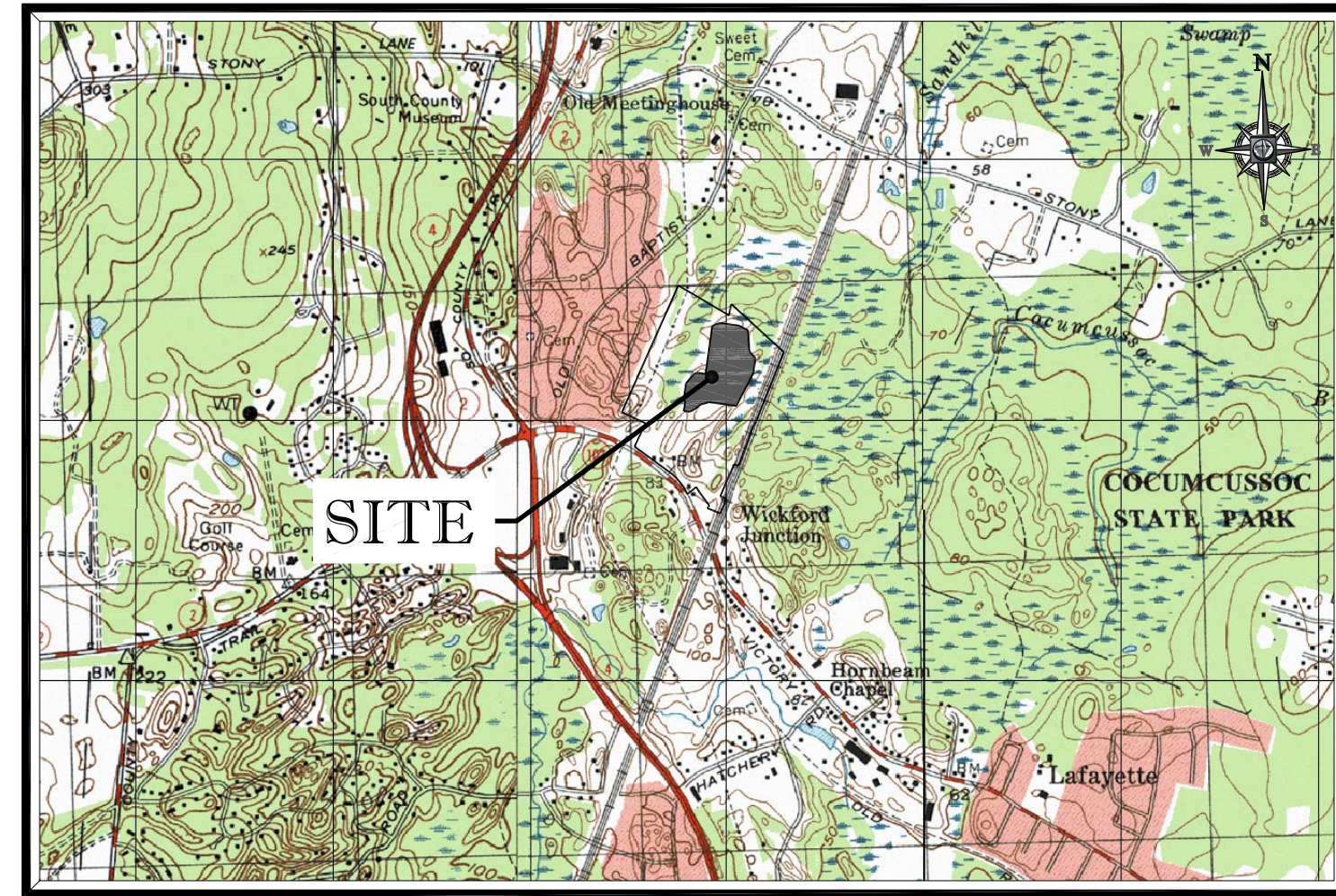
# SITE DEVELOPMENT PLANS

FOR:

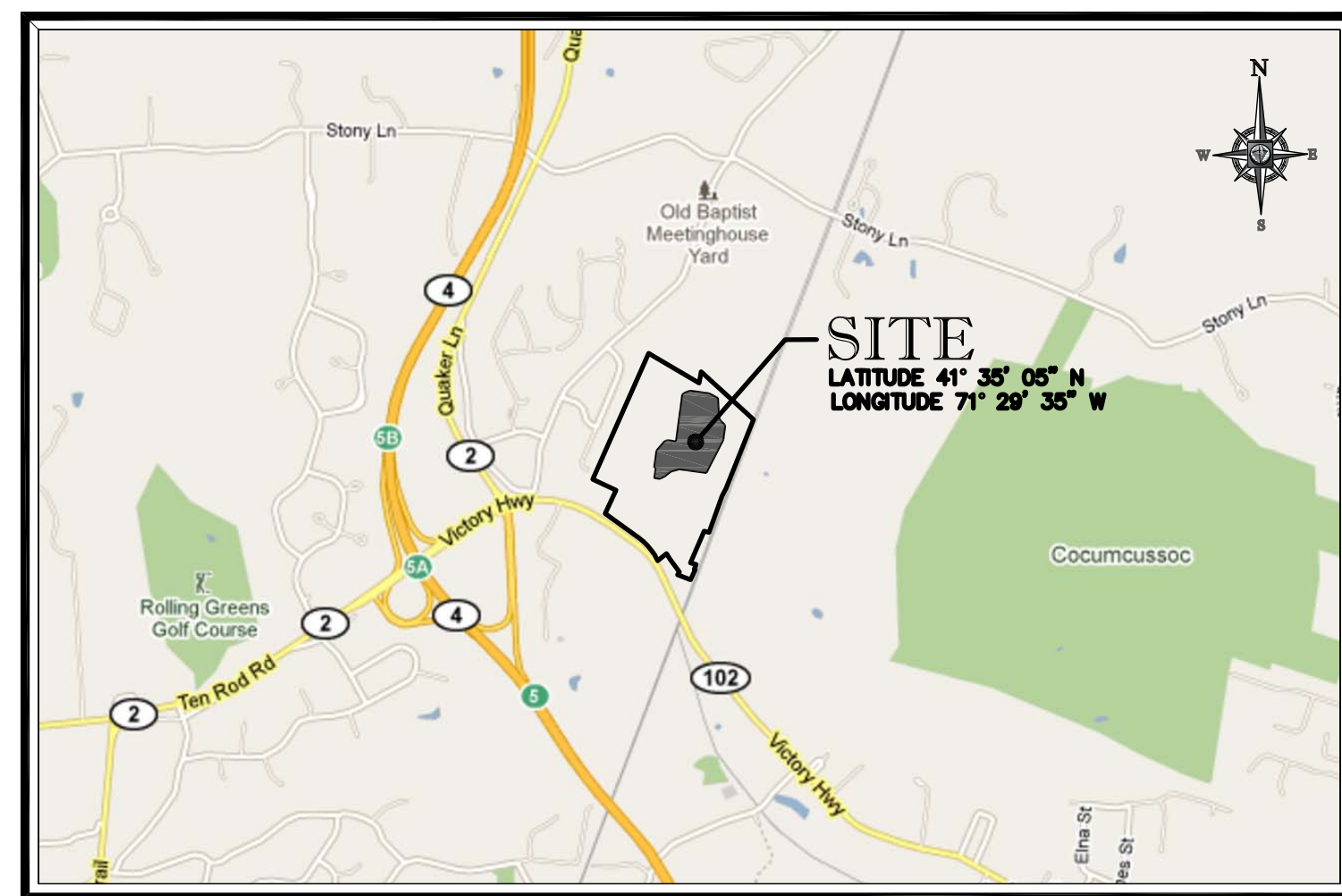


## PROPOSED EXPANSION

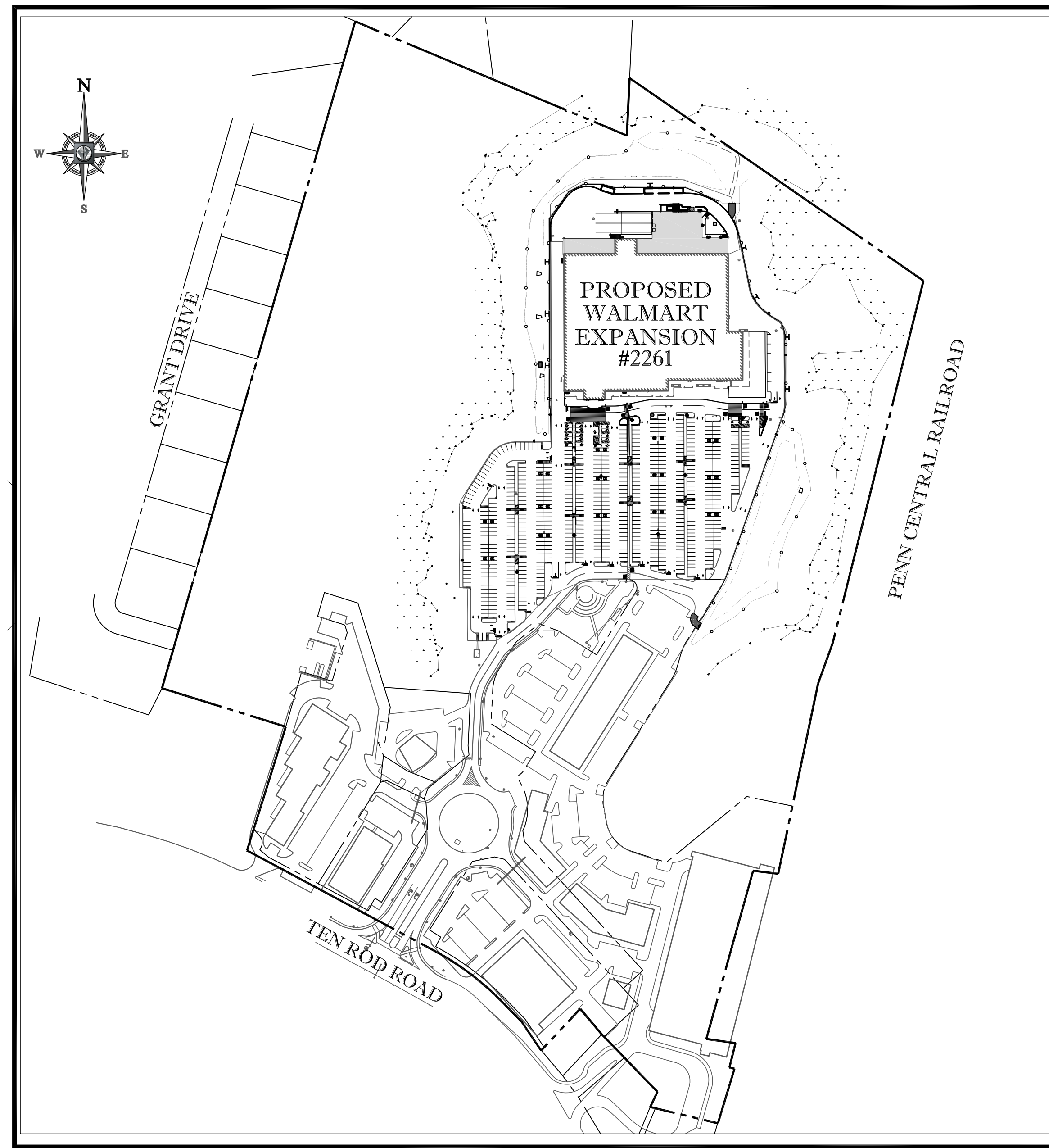
STORE #2261  
 LOT 112, PLAT 112  
 1031 TEN ROD ROAD  
 TOWN OF NORTH KINGSTOWN  
 WASHINGTON COUNTY, RHODE ISLAND



USGS QUADRANGLE MAP  
 SCALE: 1"=2000' ±



SITE LOCATION MAP  
 SCALE: 1"=2000' ±



AREA MAP  
 SCALE: 1"=200'

SHEET TITLE	SHEET NUMBER
COVER SHEET	T-1 OF 16
GENERAL NOTES SHEET	T-2 OF 16
PHASE I EROSION AND SEDIMENTATION CONTROL PLAN / SITE MAP	ES-1 OF 16
PHASE II EROSION AND SEDIMENTATION CONTROL PLAN / SITE MAP	ES-2 OF 16
EROSION AND SEDIMENT CONTROL DETAILS SHEET	ES-3 OF 16
PAVING/DEMOLITION PLAN (OMITTED FROM PLAN SET)	DM-1 OF 16
OVERALL DEVELOPMENT PLAN	C-1 OF 16
SITE PLAN	C-2 OF 16
GRADING AND DRAINAGE PLAN	C-3 OF 16
UTILITY PLAN	C-4 OF 16
LANDSCAPE PLAN	C-5 OF 16
LANDSCAPE SPECIFICATIONS AND DETAILS SHEET	C-6 OF 16
LIGHTING PLAN	C-7 OF 16
CONSTRUCTION DETAIL SHEET	D-1 OF 16
CONSTRUCTION DETAIL SHEET	D-2 OF 16
CONSTRUCTION DETAIL SHEET	D-3 OF 16
ALTA/ACSM LAND TITLE SURVEY (BY OTHERS)	2 SHEETS

### DRAWING INDEX

**BOHLER ENGINEERING**

CORPORATE OFFICE  
 WARREN, NJ

OFFICES  
 SOUTHBOROUGH, MA  
 CHANDLER, AZ  
 CHICAGO, IL  
 PHILADELPHIA, PA  
 WASHINGTON, DC  
 WASHINGTON, VA  
 WASHINGTON, VA  
 TAMPA, FL

CIVIL & CONSULTING ENGINEERS  
 SURVEYORS  
 PROJECT MANAGERS  
 ENVIRONMENTAL CONSULTANTS  
 LANDSCAPE ARCHITECTS

REVISIONS

REV	DATE	COMMENT	BY
1			
2			
3			
4			
5			
6			
7			
8			
9			
10			
11			
12			
13			
14			
15			
16			
17			
18			
19			
20			
21			
22			
23			
24			
25			
26			
27			
28			

THE FOLLOWING STATES REQUIRE NOTIFICATION BY EXCAVATORS, DESIGNERS, OR ANY PERSON PREPARING TO DISTURB THE EARTH'S SURFACE: ALABAMA, ARIZONA, ARKANSAS, CALIFORNIA, CONNECTICUT, DELAWARE, FLORIDA, GEORGIA, ILLINOIS, INDIANA, IOWA, KANSAS, KENTUCKY, LOUISIANA, MAINE, MASSACHUSETTS, MICHIGAN, MINNESOTA, MISSISSIPPI, MISSOURI, MONTANA, NEBRASKA, NEVADA, NEW HAMPSHIRE, NEW JERSEY, NEW YORK, NORTH CAROLINA, NORTH DAKOTA, OHIO, OKLAHOMA, PENNSYLVANIA, RHODE ISLAND, SOUTH CAROLINA, SOUTH DAKOTA, TENNESSEE, TEXAS, UTAH, VERMONT, VIRGINIA, WISCONSIN, WYOMING.

NOT FOR CONSTRUCTION

PROJECT No.: W100601  
 DRAWN BY: S.J.K.B.S.  
 CHECKED BY: M.D.S.M.  
 DATE: 03/30/2011  
 SCALE: AS SHOWN  
 CAD FILE: W100601.DWG

PROJECT: **SITE DEVELOPMENT PLANS FOR**

**Walmart**

STORE # 2261  
 PROPOSED EXPANSION  
 1031 TEN ROD ROAD  
 TOWN OF NORTH KINGSTOWN  
 WASHINGTON COUNTY, RI

**BOHLER ENGINEERING**

352 TURNPIKE ROAD  
 SOUTHBOROUGH, MA 01772  
 Phone: (508) 480-9900  
 Fax: (508) 480-9080  
[www.BohlerEngineering.com](http://www.BohlerEngineering.com)

**M.D. SMITH**

PROFESSIONAL ENGINEER  
 MASSACHUSETTS LICENSE No. 5096  
 RHODE ISLAND LICENSE No. 8145  
 CONNECTICUT LICENSE No. 24587  
 MAINE LICENSE No. 11023  
 NEW HAMPSHIRE LICENSE No. 12951

SHEET TITLE:  
**COVER SHEET**

SHEET NUMBER:  
**T-1**  
 OF 16

REV 0- 03/30/2011

PREPARED BY:

**BOHLER ENGINEERING**

352 TURNPIKE ROAD  
 SOUTHBOROUGH, MA 01772  
 508-480-9900 - 508-480-9080 FAX

OWNER:  
**Walmart Real Estate Business Trust**  
 702 S.W. 8th STREET BENTONVILLE,  
 ARKANSAS 72716-0550