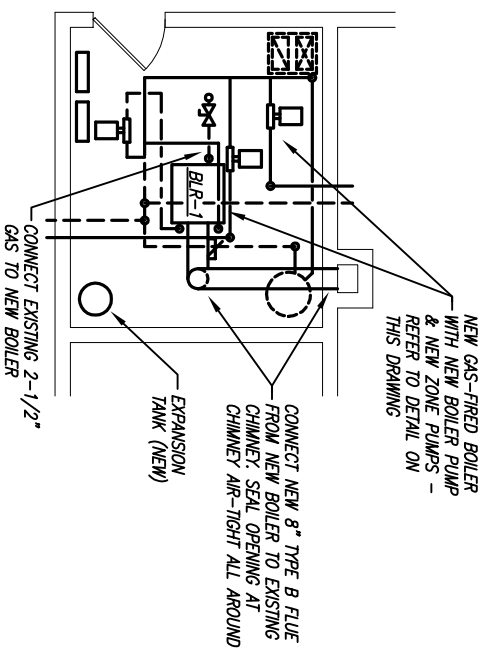


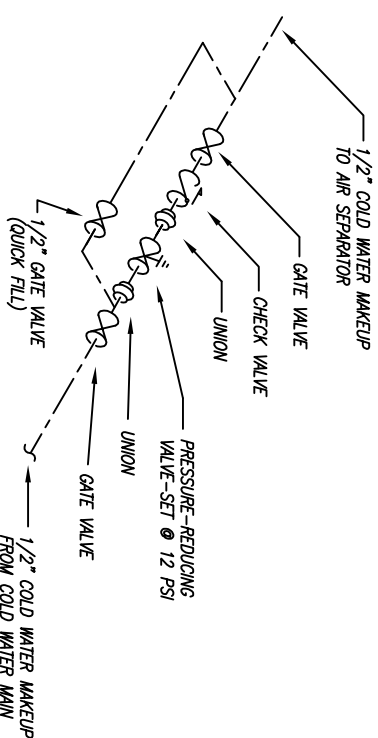
PARTIAL PLAN - BOILER ROOM DEMO  
SCALE 1/8" = 1'-0"



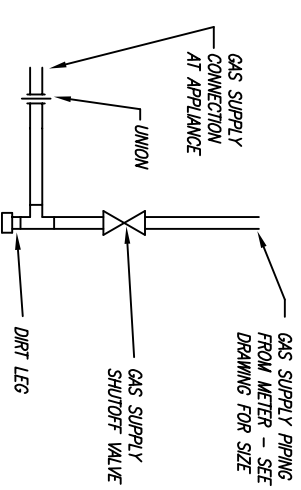
PARTIAL PLAN - BOILER ROOM PROPOSED  
SCALE 1/8" = 1'-0"

**MECHANICAL NOTES**

1. THE AWARDED CONTRACTOR SHALL COORDINATE ALL WORK TO BE PERFORMED WITH ANY SUB-CONTRACTORS (I.E. PLUMBING OR ELECTRICAL). ANY WORK DONE BY THIS CONTRACTOR WHICH INTERFERES WITH WORK BY OTHERS AND WHICH WAS NOT FIRST COORDINATED SHALL BE REMOVED AND RELOCATED AT THE AWARDED CONTRACTOR'S EXPENSE.
2. THIS CONTRACTOR SHALL BE RESPONSIBLE FOR VERIFICATION OF ALL UTILITIES AND THE PLACEMENT OF ALL MECHANICAL EQUIPMENT PRIOR TO THE START OF HIS WORK. NO EXTRAS WILL BE ALLOWED DUE TO EQUIPMENT LOCATION CHANGE FROM THAT SHOWN ON DRAWINGS.
3. IT IS THE INTENT THAT THE WORK SHALL BE COMPLETE IN EVERY RESPECT, AND THAT ANY MATERIAL OR WORK NOT SPECIFICALLY MENTIONED OR SHOWN ON THE DRAWINGS, BUT NECESSARY TO FULLY COMPLETE THE WORK, SHALL BE PROVIDED.
4. THE LOCATION OF SOME ITEMS SHOWN ON THE DRAWINGS MAY BE APPROXIMATE AND THE OWNER SHALL HAVE THE RIGHT TO MAKE REVISIONS BEFORE THE WORK IS INSTALLED, WITHOUT ADDITIONAL COST.
5. THE CONTRACTOR SHALL FILE ALL PLANS WITH LOCAL BUILDING INSPECTOR, AND REQUEST INSPECTIONS FOR INSTALLATION OF SYSTEMS AS REQUIRED. ALL ASSOCIATED FEES WILL BE THE RESPONSIBILITY OF THE MECHANICAL CONTRACTOR.
6. THE CONTRACTOR SHALL COMPLY WITH ALL FEDERAL, STATE AND LOCAL LAWS, ORDINANCES, RULES AND REGULATIONS PERTAINING TO THE MECHANICAL SYSTEMS INSTALLATION. CERTIFICATES OF INSPECTION SHALL BE PROVIDED TO THE OWNER AT PROJECT CLOSEOUT.
7. THE CONTRACTOR SHALL FIELD-VERIFY ALL DIMENSIONS - DO NOT ASSUME THAT THE DRAWINGS ARE IN EXACT SCALE.



TYPICAL BOILER MAKEUP WATER DETAIL  
NO SCALE



TYPICAL GAS CONNECTION DETAIL  
NO SCALE

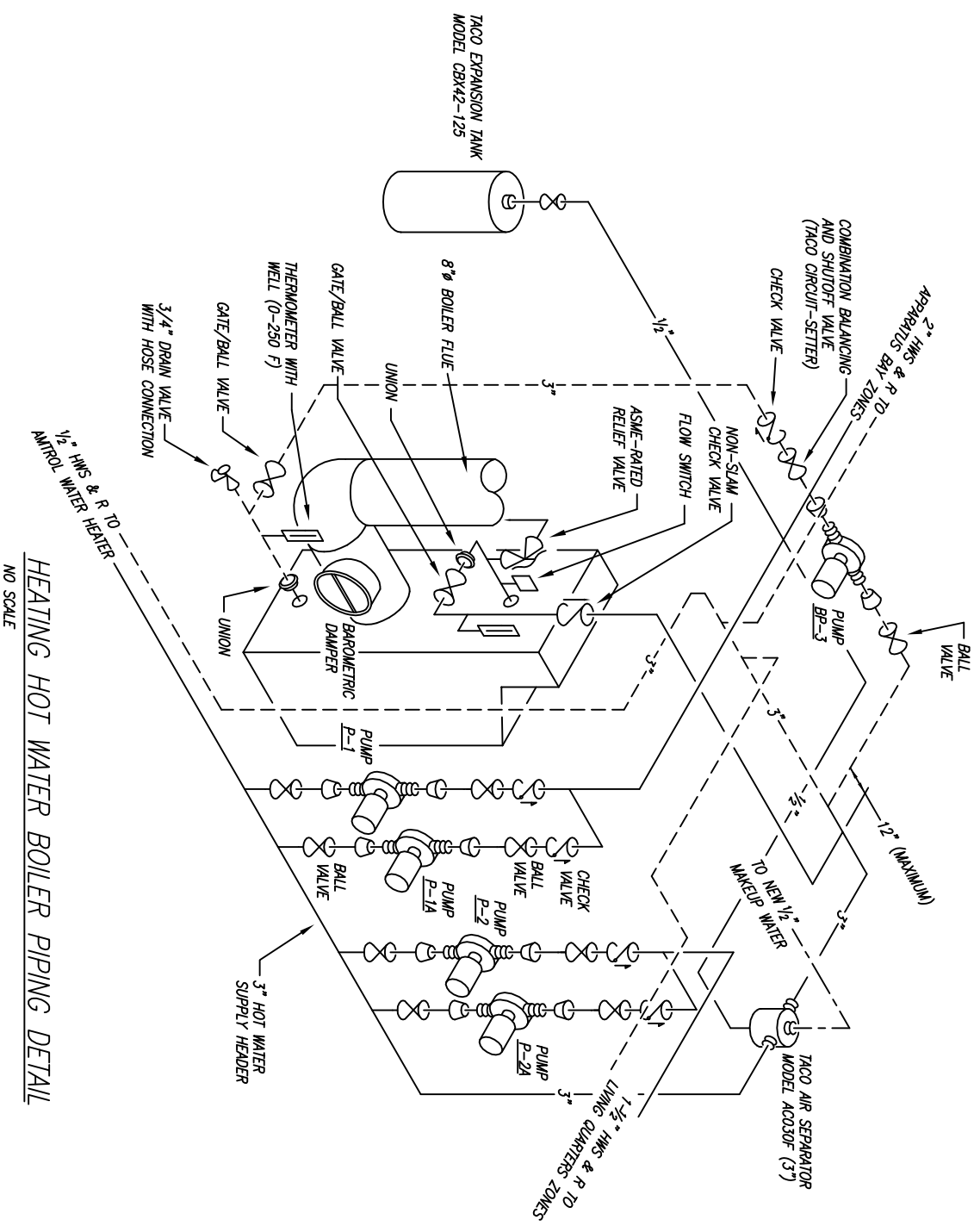
**PUMP SCHEDULE**

SYMBOL	SERVICE	GPM	HEAD (FT)	ELECTRICAL DATA			MODEL NUMBER
				MOTOR HP	MOTOR RPM	VOLTAGE	
P-1 & 1A	APPARATUS BAY	42	28	1/2 HP	1750	120 V/1Ø	TACO MODEL 1612 (IN-LINE)
P-2 & 2A	LIVING QUARTERS	23	23	1/3 HP	1750	120 V/1Ø	TACO MODEL 1610 (IN-LINE)
BP-3	BOILER WATER	70	10	1/3 HP	1750	120 V/1Ø	TACO MODEL 1610 (IN-LINE)

**WATER BOILER SCHEDULE**

SYMBOL	OUTPUT (GROSS)	GAS INPUT	MAX. WORKING PRESSURE	RELIEF VALVE SETTING	FLUE DIAMETER	ELECTRICAL DATA		MODEL NUMBER
						MOTOR HP	VOLTAGE	
BLR-1	637,000 BTUH	750 CFH	150 PSI	30 PSI	8" DIA.	1/2 HP	120 V/1Ø	PATERSON-KELLEY MODEL N-750-1X

1. FURNISH BOILER WITH BAROMETRIC DAMPER, LOOSE COMPUTER CONTROL (FOR OUTDOOR TEMPERATURE CONTROL), AND ASME CSD-1 BOILER CONTROLS



HEATING HOT WATER BOILER PIPING DETAIL  
NO SCALE

**FLOOR PLAN, DETAILS & NOTES - MECHANICAL**

Date: Oct 18, 2017	Scale: As Noted
Drawn By: RKB	Job No: 2017M44
Drawing No.	

**M1.1**

**FIRE STATION NO. 3**  
**Boiler Replacement / Upgrades**  
**North Kingstown, Rhode Island**

ROBERT KYLE BAKER  
No. 5333  
REGISTERED PROFESSIONAL ENGINEER

**R.K. BAKER & ASSOCIATES**  
MECHANICAL ENGINEERS  
21 Burdick Drive  
Crantston, Rhode Island 02920

**REVISIONS**

No.	Date	Description